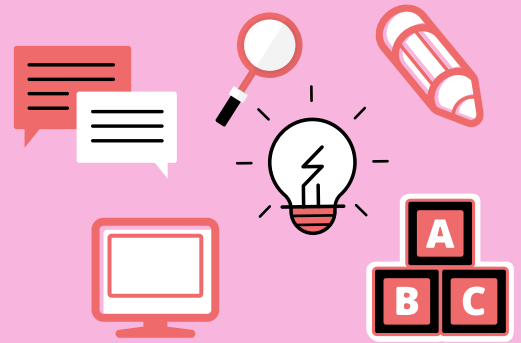


SAMPLE CRISIS SAFETY PLAN



1 Behavior: ELOPING

People: *PARENT/TEACHER/SITE COORDINATOR*

Actions:

1. Calmly follow to ensure safety
2. Block access to other doors and dangerous items
3. Calmly guide back to room
4. Contact additional school or site support if necessary

2

Behavior: AGGRESSION

People: *ALL PARTICIPANTS/SITE COORDINATOR*

Actions:

1. Attempt to calmly block aggression
2. Ensure safety of others, block access and check on them "are you okay?"
3. Block access to dangerous items that could be thrown etc
4. If possible, guide to safe space
5. Give the child time to calm down (it may take a while!)
6. if the clinician and on-site participants do not feel like can manage or de-escalate, contact emergency services (911)

3 Behavior: SELF-HARM

People: *PARENT/PARENT WITH THE SUPPORT OF SCHOOL STAFF/SITE COORDINATOR*

Actions:

1. Assess the severity of self-harm
2. If not breaking skin or leaving bruises, then, ignore.
3. If potentially harmful, then, calmly block without aggression.
4. Calmly praise for non-aggressive behavior
5. Allow time for child to calm down.
6. If verbal or physical threats continue, complete risk assessment
7. If patient expresses intent and plan to continue to harm themselves, take them to emergency room
8. Share local crisis management resources

4

Behavior: UNSAFE BEHAVIOR TOWARD CHILD

People: *CLINICIAN*

Actions:

1. Attempt to prompt a safer alternative
2. Suggest break and support from other participants
3. Stop session
4. Call site coordinator to set up alternative safety plan
5. Make Child Protective Services report if necessary

DEVELOPED BY

Telehealth ROCKS

Rural Outreach for the Children of Kansas